

# 2MP 36X BULLET CAMERA

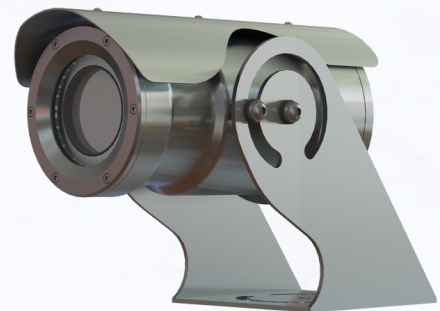
Stainless Steel 316L **Ex-Proof** 2MP 36X Zoom Camera



## GC-XBN-236Z

### Key Features

- AISI 316L Electro Polished Stainless Steel
- 2MP H.265 Network 36X Zoom
- Optical 36X Zoom, 6 ~ 216mm
- 56.5° ~2.1°(H)
- Shock and Vibration Tested
- Tempered Glass
- 12VDC / POE
- IP68
- -40°C~60°C



**GC-XBN-236Z**

# PRODUCT SPECIFICATIONS

GC-XBN-236Z

## Camera

- **Image sensor**  
1/2" Sony Exmor CMOS
- **Scanning mode**  
Progressive scan
- **Lens**  
Optical zoom 36x, 6.0-216mm  
± 5%, F1.5
- **Digital zoom**  
8x
- **Angle of view**  
H: 56.5°-2.1° / V: 33.6°-1.2°
- **Shutter speed**  
Automatic / Manual  
1/3,000sec - 1/30sec
- **Day/night**  
ICR(auto/day/night)
- **Min. illumination**  
Color: 0.05Lux,  
B/W: 0.01Lux
- **Camera setting**  
DOL HDR, DNR, BLC, HLC,  
White balance, Exposure  
control, Mirror, Flip, Privacy  
masking, Corridor format, LDC,  
OSD
- **Analytics**  
Tamper, Video motion detection

## Video

- **Compression**  
H.265(Main profile), H.264(High,  
Main, Base line profile), MJPEG
- **Resolution**  
1920x1080, 1280x720, 1024x576,  
768x430, 704x394, 640x3600,  
384x216
- **Frame rate**  
Max. 60(50)fps@1920x1080
- **Streaming**  
Simultaneously H.265, H.264 and  
MJPEG (Triple streaming)  
Independent Frame Rate and  
Bandwidth Control, VBR/CBR

## Network

- **Security**  
Multi User Authority, IP Filtering,  
HTTPS
- **Protocol**  
TCP/IP, UDP, IPv4/v6, HTTP,  
HTTPS, FTP, UPnP, RTP, RTSP,  
RTCP, DHCP, ARP, Zeroconf
- **API**  
Open API, ONVIF profile S, T

## MAIN CERTS

### ATEX

ATEX (EN 60079-0: 2017 , EN 60079-1:  
2014 , EN 60079-31: 2013):  
II 2 G Ex d IIC T6 Gb Ta -40°C to +60°C  
II 2 D Ex tb IIIC T85°C Db Ta -40°C to  
+60°C

### IECEX

IECEX (IEC 60079-0: 2017 , IEC 60079-  
1: 2014 , IEC 60079-31: 2013):  
I Ex d IIC T6 Gb Ta -40°C to +60°C  
IEx tb IIIC T85°C Db Ta -40°C to +60°C

Certified by DeKRA



## General

- **Connectors**

One conduit entry

Ethernet RJ-45(10/100/1000Base-T)

Power 2pin terminal block

- **Power supply**

12VDC / POE

- **Power consumption**

250mA(12W)@PoE, 1A (12W)

@12VDC

- **Operating humidity**

0-90% RH(Non-condensing)

- **Operating temperature**

-40°C - +60°C

- **Ingress protection**

IP68

- **Dimension**

121(W)x178(H)x250(D)mm

- **Weight**

Approx. 6Kg

- **Certification**

ATEX, IECEx, KCs