

12MP FISHEYE CAMERA

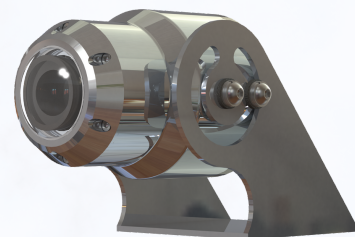
Stainless Steel 316L 12MP Fisheye Camera



GC-F12BN

Key Features

- AISI 316L Electro Polished Stainless Steel
- 12MP H.265 Network Camera
- H: 180° / V: 180° View
- Shock and Vibration Tested
- 12VDC / POE
- IP66
- -40°C~60°C



GC-F12BN

PRODUCT SPECIFICATIONS

GC-F12BN

Camera

- **Image sensor**
1/1.7" Sony STARVIS CMOS
- **Scanning mode**
Progressive scan
- **Lens**
Fixed 1.85mm±5%, F2.0
- **Digital zoom**
8x
- **Angle of view**
H: 180° / V: 180°
- **Shutter speed**
Auto/Manual
1/30,000sec-1/30sec
- **Min. illumination**
Color: 0.09Lux
- **Camera setting**
DOL HDR, 3D-NR, BLC, HLC, White balance, Exposure control, Mirror, Flip, Privacy masking, LDC, OSD
- **Analytics**
Tamper, Video motion detection

Video

- **Compression**
H.265(Main profile), H.264(High, Main, Base line profile), MJPEG
- **Resolution**
4000x3000, 3840x2160,
2592x1944, 2048x1536,
1920x1080, 1280x720, 1024x576,
768x432, 704x392, 640x360,
384x216
- **Frame rate**
Max. 20fps@4000x3000
- **Streaming**
Simultaneously H.265, H.264 and MJPEG (Triple streaming)
Independent frame rate and bandwidth control, VBR/CBR

Network

- **Security**
Multi User Authority, IP Filtering, HTTPS
- **Protocol**
TCP/IP, UDP, IPv4/v6, HTTP, HTTPS, FTP, UPnP, RTP, RTSP, RTCP, DHCP, ARP, Zeroconf
- **API**
Open API, ONVIF profile S, T

MAIN CERTS

- CE
- FCC
- KC
- IP66





General

- **Connectors**

Ethernet RJ-45(10/100/1000Base-T)

DC jack

- **Power supply**

12VDC / POE

- **Power consumption**

TBD

- **Operating humidity**

0-90% RH(Non-condensing)

- **Operating temperature**

-40°C - +60°C

- **Ingress protection**

IP66

- **Dimension**

TBD

- **Weight**

TBD

- **Certification**

CE, FCC, KC

OPTIONAL ACCS

AISI 316L JB

