

HEAT DETECTION CAMERA

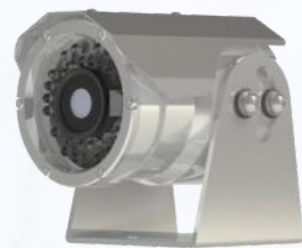
Stainless Steel 316L Thermal Detection Camera



GC-2BNT

Key Features

- AISI 316L stainless steel
- Full-HD network camera
- Thermal detection 20°C~450°C
- Thermal detection angle: 51° (H) x 39° (V)
- PoE
- IP66



GC-2BNT



PRODUCT SPECIFICATIONS

GC-2BNT

Camera

- **Image sensor**
1/2.8" Sony STARVIS CMOS
- **Scanning mode**
Progressive scan
- **Lens**
3.6mm±5%
- **Angle of view**
H: 87° / V: 47°
- **Electric shutter**
Indoor / Outdoor / Indoor-
Anti blur/ Outdoor-Anti blur
/ Manual(1/30~1/30000, 11steps)
- **Min. illumination**
Color : 0.2Lux
BW : 0.0Lux(LED on)
- **Camera setting**
WDR, DNR, BLC, HLC, Defog,
AGC, ACE, DSS, White balance,
Exposure control, Mirror, Flip,
Privacy masking, OSD
- **Thermal Detection**
Sensor: LWIR, wavelength 8~14μm
FOV: 51°(H) x 39°(V)
Detection degree: 20~450°C
Minimum object size:
 - Distance 1m: 0.05x0.05m
 - Distance 10m: 0.5mx0.5m

Video

- **Compression**
H.264(High, Main, Baseline
profile), MJPEG
- **Resolution**
1920×1080, 1280×720, 800×600,
704×480, 704×400, 640×360,
480×272, 320×184
- **Frame rate**
Max. 30fps@1920x1080
- **Streaming**
Simultaneously H.264 and
MJPEG (Dual streaming)
Independent frame rate and
bandwidth control, VBR/CBR

Network

- **Security**
Multi User Authority
- **Protocol**
HTTP, RTSP/RTP, TCP/IP, UDP,
ARP, ICMP, DHCP
- **API**
API, ONVIF profile S



General

- **Connectors**

Ethernet RJ-45

Power 2pin wire

- **Power supply**

PoE, 12Vdc(option)

- **Power consumption**

120mA@PoE, 400mA@12Vdc(option)

- **Operating humidity**

0-90% RH(Non-condensing)

- **Operating temperature**

-10°C - +45°C

- **Ingress protection**

IP66

- **Dimension**

90(W) x 114(H) x 144(D)mm

- **Weight**

Approx. 2.4Kg

OPTIONAL ACCS

AISI 316L JB

